

OKSAN[®]
RUBBER

confidence
sturdiness
quality

PRODUCT
CATALOGUE



www.oksankaucuk.com.tr

www.oksankaucuk.com.tr

ABOUT Us

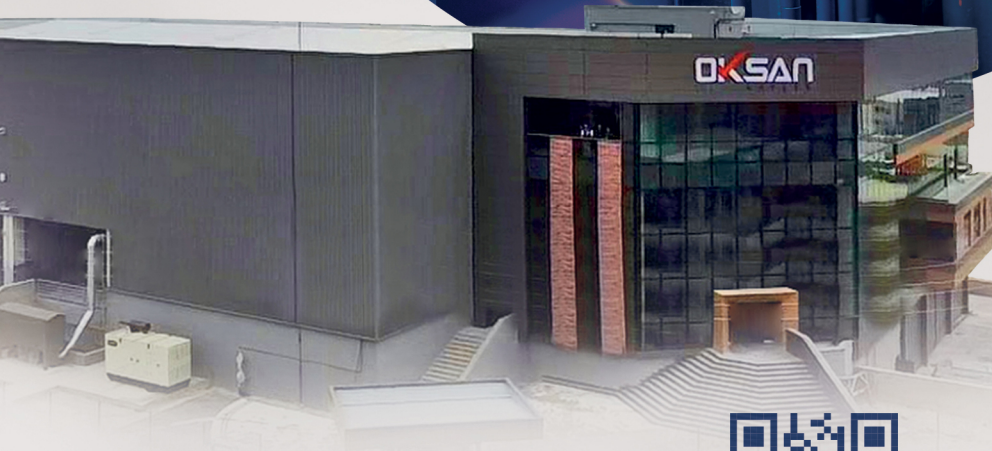
OKSAN is one of the largest aftermarket manufacturer for engine and shock absorber mountings, steering wheel and axle bellows, wishbone arm and link stabilizer bushes, ball joint dust covers, and another industrial rubber parts of passenger and light commercial vehicles in its own sector. Oksan, since the day the production started in 1980, as a result of targeting market and customer desires, we could be able to reach the highest level of quality in the entire company. All the necessary investments to maintain and complete activities have been realized without cease. In 2004, as a natural result of all these progresses, ISO 9001 Quality Management System certificate could have been awarded until today and in October 2008 the re-certification was upgraded to ISO 9001:2008 revision.



ISO
9001
CERTIFICATION
EUROPE™



42 years of experience



www.oksankaucuk.com.tr



OKSAN[®]
RUBBER



CITROEN



AXLE BELLOWS

CI011



COMPATIBLE VEHICLES :
BERLINGO Furgonato (M_) 1996-
BERLINGO (MF) 1996-
BERLINGO Box (B9) 2008-
BERLINGO (B9) 2008-
C5 III Break (TD_) 2008-

OEM NO : 3287.A9, 964777918

AXLE BELLOWS, KIT

CI011-K



COMPATIBLE VEHICLES :
BERLINGO (B9) 2008-
BERLINGO (MF) 1996-
BERLINGO Box (B9) 2008-
C2 (JM_) 2003-2012
C3 I (FC_) 2002-

OEM NO : 3287.A9, 964777918

AXLE BELLOWS

CI012



COMPATIBLE VEHICLES :
C2 (JM_) 2003-2012
C3 I (FC_) 2002-
C3 II (SC_) 2009-
C3 Pluriel (HB_) 2004-
C3 PICASSO (SH_) 2009-2013

OEM NO : 3287.81, 3287.92, 9567468588, 9621047580

AXLE BELLOWS, KIT

CI012-K



COMPATIBLE VEHICLES :
ZX Break (N2) 1993-1999
XSARA PICASSO (N68) 1999-
XSARA Kombi van 1998-2005
XSARA (N1) 1997-2005
XANTIA Break (X1_, X2_) 1995-2003

OEM NO : 3287.81*, 3287.92*, 9567468588*, 9621047580*

AXLE BOOT, OUTER (THERMOPLASTIC)

CI035



COMPATIBLE VEHICLES :
JUMPER Bus 2006-
JUMPER Furgonato 2006-
JUMPER Pianele piatto/Telaio 2006-

OEM NO : 3293.E1, 1607740880, 46308480, 46308383, 71771153

AXLE BOOT, OUTER (KIT)

CI035-K



COMPATIBLE VEHICLES :
JUMPER Platform şasi (244) 2002-2006
JUMPER Panelvan/Van (244) 2002-
2006
JUMPER Panelvan/Van (230L) 2000-
2002

OEM NO : 16 077 408 80*, 16 077 408 80 SK1, 3293.E1*, 3293.E1

AXLE BOOT, OUTER (RUBBER)

CI035-RU



COMPATIBLE VEHICLES :
JUMPER Bus 2006-
JUMPER Furgonato 2006-
JUMPER Pianele piatto/Telaio 2006-

OEM NO : 3293.E1

AXLE BOOT, OUTER (RUBBER)

CI036-RU



COMPATIBLE VEHICLES :
JUMPER Bus 2006-
JUMPER Furgonato 2006-
JUMPER Pianele piatto/Telaio 2006-

OEM NO : 3293.E2, 46308311, 3287.C4

AXLE BOOT, OUTER

CI044



COMPATIBLE VEHICLES :
NEMO Box (AA_) 2008-
NEMO Estate 2009-
NEMO Furgonato (AA_) 2008-
NEMO Station wagon 2009-

OEM NO : 3293.F2

AXLE BOOT, OUTER

CI045



COMPATIBLE VEHICLES :
C3 I (FC_) 2002-
C3 II (SC_) 2009-
C3 Pluriel (HB_) 2004-
C3 PICASSO (SH_) 2009-2013
C4 Coupe (LA_) 2004-2011

OEM NO : 3293.20

AXLE BOOT, OUTER (KIT)

CI045-K



COMPATIBLE VEHICLES :

XSARA PICASSO (N68) 1999-
XSARA Furgonato 2000-2005
XSARA Coupe (N0) 1998-2005
XSARA Break (N2) 1997-2005
XSARA (N1) 1997-2005

OEM NO : 3293.20

AXLE BOOT

CI047



COMPATIBLE VEHICLES :

C3 I (FC_) 2002-
C3 Pluriel (HB_) 2004-
C4 Coupe (LA_) 2004-2011
C4 I (LC_) 2004-2011
BERLINGO (B9) 2008-

OEM NO : 3287.88

AXLE BELLOWS, KIT

CI047-K



COMPATIBLE VEHICLES :

XSARA PICASSO (N68) 1999-
XSARA Furgonato 2000-2005
XSARA Coupe (N0) 1998-2005
XSARA Break (N2) 1997-2005
XSARA (N1) 1997-2005

OEM NO : 3287.88

AXLE BELLOWS

CI057



COMPATIBLE VEHICLES :

JUMPER Pianele piatto/Telaio 2006-
JUMPER Furgonato 2006-
JUMPER Bus (244, Z_) 2002-

OEM NO : 3287.C4, 1607741580

AXLE BELLOWS

CI061



COMPATIBLE VEHICLES :

ZX Break (N2) 1993-1999
ZX (N2) 1991-1999
XSARA PICASSO (N68) 1999-
XSARA Furgonato 2000-2005
XSARA Coupe (N0) 1998-2005

OEM NO : 3293.31, 9645967480

AXLE BELLOWS, KIT

CI061-K



COMPATIBLE VEHICLES :

BERLINGO (B9) 2008-
BERLINGO (MF) 1996-
BERLINGO Box (B9) 2008-
BERLINGO Furgonato (M_) 1996-
C15 (VD_) 1984-2005

OEM NO : 3293.31, 9645967480

AXLE BELLOWS, OLD MODEL

FI097



COMPATIBLE VEHICLES :

NEMO Box (AA_) 2008-
NEMO MPV 2009-

OEM NO : 46307575, 71771164, 7761570, 3293F1

AXLE BOOT, OUTER (NEW MODEL)

FI154



COMPATIBLE VEHICLES :

NEMO MPV 2009-
NEMO Box (AA_) 2008-

OEM NO : 7761570*, 46307575*, 71771164*, 3293F1*

AXLE BOOT, OUTER

PE016



COMPATIBLE VEHICLES :

C5 I (DC_) 2001-2004
C5 I Break (DE_) 2001-2004
BERLINGO (B9) 2008-
BERLINGO Box (B9) 2008-
BERLINGO (MF) 1996-

OEM NO : 3293.03

AXLE BELLOWS

PE044



COMPATIBLE VEHICLES :

BERLINGO Furgonato (M_) 1996-
BERLINGO (MF) 1996-
BX Break (XB_) 1983-1994
BX (XB_) 1983-1993
AX (ZA_) 1986-1998

OEM NO : 3287.68, 3287.69, 3287.83, 7701469418, 95619709

AXLE BELLOWS, KIT

PE044-K



COMPATIBLE VEHICLES :
 BX Break (XB_) 1983-1994
 BX (XB_) 1983-1993
 BERLINGO Furgonato (M_) 1996-
 BERLINGO (MF) 1996-
 AX (ZA_) 1986-1998

OEM NO : 3287.68*, 3287.69*, 3287.83*, 7701469418*, 95619709*

AXLE BELLOWS

PE045



COMPATIBLE VEHICLES :
 C3 I (FC_) 2002-
 C15 (VD_) 1984-2005
 C15 Station Wagon 1987-1996
 BERLINGO (MF) 1996-
 BERLINGO Furgonato (M_) 1996-

OEM NO : 3287.95

AXLE BELLOWS, KIT

PE045-K



COMPATIBLE VEHICLES :
 C3 I (FC_) 2002-
 C15 Station Wagon 1987-1996
 C15 (VD_) 1984-2005
 BERLINGO Furgonato (M_) 1996-
 BERLINGO (MF) 1996-

OEM NO : 3287.95*

AXLE BELLOWS

PE049



COMPATIBLE VEHICLES :
 C4 Coupe (LA_) 2004-2011
 C4 I (LC_) 2004-2011
 C5 I (DC_) 2001-2004
 C5 I Break (DE_) 2001-2004
 C5 II (RC_) 2004-2008

OEM NO : 3287.96, 3287.A4, 9641152180

AXLE BELLOWS

PE050



COMPATIBLE VEHICLES :
 JUMPER Box (230L) 1994-2002
 JUMPER Bus 2006-
 JUMPER Bus (230P) 1994-2002
 JUMPER Bus (244, Z_) 2002-

OEM NO : 3287.90, 3287.77

AXLE BELLOWS

PE051



COMPATIBLE VEHICLES :
 JUMPER Box (230L) 1994-2002
 JUMPER Bus (230P) 1994-2002
 JUMPER Bus (244, Z_) 2002-
 JUMPER Furgonato (244) 2002-

OEM NO : 3287.78, 9564479580

AXLE BELLOWS, KIT

PE051-K



COMPATIBLE VEHICLES :
 JUMPER Furgonato (244) 2002-
 JUMPER Bus (244, Z_) 2002-
 JUMPER Bus (230P) 1994-2002
 JUMPER Box (230L) 1994-2002

OEM NO : 3287.78*, 9564479580*

AXLE BOOT, OUTER

PE060



COMPATIBLE VEHICLES :
 JUMPER Pianele piatto/Telaio (230)
 1994-2002
 JUMPER Furgonato (244) 2002-
 JUMPER Bus (244, Z_) 2002-
 JUMPER Bus (230P) 1994-2002

OEM NO : 3293.A2, 3293.07

AXLE BOOT, OUTER (KIT)

PE060-K



COMPATIBLE VEHICLES :
 JUMPER Pianele piatto/Telaio (230)
 1994-2002
 JUMPER Furgonato (244) 2002-
 JUMPER Bus (244, Z_) 2002-
 JUMPER Bus (230P) 1994-2002

OEM NO : 3293.A2*, 3293.07*

AXLE BELLOWS, BIG

PE910



COMPATIBLE VEHICLES :
 XSARA Coupe (N0) 1998-2005
 XSARA Break (N2) 1997-2005
 XSARA (N1) 1997-2005
 C4 II (NC_) 2009-2017
 C4 Coupe (LA_) 2004-2011

OEM NO : 46308542, 7701209354

AXLE BELLOWS, THIN

RE092



COMPATIBLE VEHICLES :
BERLINGO / BERLINGO FIRST MPV
(MF_, GJK_, GFK_) 1996-2011
SAXO (S0,S1) 1996-2003
XSARA (N1) 1997-2005
XSARA Break (N2) 1997-2005

OEM NO : 7701467125, 7701034800, 3293.05

AXLE BELLOWS, THIN, KIT

RE092-K



COMPATIBLE VEHICLES :
ZX Break (N2) 1993-1999
XSARA Coupe (N0) 1998-2005
XSARA Break (N2) 1997-2005
XSARA (N1) 1997-2005
SAXO (S0,S1) 1996-2003

OEM NO : 7701467125, 7701034800, 3293.05

AXLE BELLOWS

RE094



COMPATIBLE VEHICLES :
ZX (N2) 1991-1999
ZX Break (N2) 1993-1999

OEM NO : 7701471522, 7700108269

AXLE BELLOWS

RE126



COMPATIBLE VEHICLES :
XM Break (Y4) 1994-2000
XM Break (Y3) 1991-1994
XM (Y4) 1994-2000
XANTIA Break (X2) 1999-2003
XANTIA Break (X1) 1995-1998

OEM NO : 3293.A1, 3293.98, 7701470155, 1488277080,

SHOCK ABSORBER DUST BELLOW

PE148



COMPATIBLE VEHICLES :
JUMPER Panelvan/Van 2.0 BlueHDi
2006-2019
JUMPER Platform şasi 2.0 BlueHDi
2006-2019

OEM NO : 5033.A6, 1385496080, 50705790

SHOCK ABSORBER DUST BELLOW

PE150



COMPATIBLE VEHICLES :
ZX Break (N2) 1993-1999
XSARA PICASSO (N68) 1999-
XSARA (N1) 1997-2005
C15 (VD_) 1984-2005
BERLINGO (MF) 1996-

OEM NO : 5254.13, 5254.26

SHOCK ABSORBER DUST BELLOW

PE151



COMPATIBLE VEHICLES :
XSARA (N1) 1997-2005
BERLINGO / BERLINGO FIRST MPV
(MF_, GJK_, GFK_) 1996-2011
XSARA Break (N2) 1997-2005
XSARA Coupe (N0) 1998-2005

OEM NO : 5254.29, 5254.33

SHOCK ABSORBER DUST BELLOW

PE153



COMPATIBLE VEHICLES :
JUMPER Bus (230P) 1994-2002
JUMPER Bus (244, Z_) 2002-

OEM NO : 5033.41, 1313045080, 1311247080

SPRING CAP

CI073



COMPATIBLE VEHICLES :
C-ELYSEE (DD_) 2012-2017
C2 (JM_) 2003-2012
C3 I (FC_) 2002-
C3 II (SC_) 2009-
C3 Pluriel (HB_) 2004-

OEM NO : 5033.75, 5033.69, 5033.C9

STRUT MOUNTING

CI107



COMPATIBLE VEHICLES :
DS 7 Crossback (J_) 2017-2018
C4 Picasso II 2013-
C4 GRAND PICASSO II (DA_, DE_)
2013-
BERLINGO (ER_, EC_) 2018-

OEM NO : 98 004 797 80, 36 37 402, 9800480380, 9817592480,

SHOCK ABSORBER MOUNTING, WITH

CI107-K



COMPATIBLE VEHICLES :
 BERLINGO (ER_, EC_) 2018-
 C4 GRAND PICASSO II (DA_, DE_)
 2013-
 C4 Picasso II 2013-
 C5 AIRCROSS (A_) 2018-

OEM NO : 98 004 797 80, 36 37 402, 9800480380, 9817592480,

SHOCK ABSORBER MOUNTING

CI117



COMPATIBLE VEHICLES :
 C2 (JM_) 2003-2012
 C3 I (FC_) 2002-
 C3 Pluriel (HB_) 2004-

OEM NO : 5038.91, 5038.49, 5031.80, 9646254781

SHOCK ABSORBER MOUNTING, WITH BEARING

CI117-B



COMPATIBLE VEHICLES :
 C2 (JM_) 2003-2012
 C3 I (FC_) 2002-
 C3 Pluriel (HB_) 2004-

OEM NO : 5038.91, 5038.49, 5031.80, 9646254781

SHOCK ABSORBER MOUNTING (KIT)

CI117-K



COMPATIBLE VEHICLES :
 C2 (JM_) 2003-2012
 C3 I (FC_) 2002-
 C3 Pluriel (HB_) 2004-

OEM NO : 5038.91, 5038.49, 5031.80, 9646254781

SHOCK ABSORBER MOUNTING

CI126



COMPATIBLE VEHICLES :
 DS3 2009-2015
 DS3 Cabriolet 2013-
 C4 CACTUS 2014-
 C3 III (SX) 2016-

OEM NO : 9811370580, 98 113 705 80

SHOCK ABSORBER MOUNTING, WITH BEARING

CI126-B



COMPATIBLE VEHICLES :
 DS 3 (SA_) 2015-2019
 DS3 (SA_) 2009-2015
 C3 III (SX) 2016-
 C4 CACTUS 2014-

OEM NO : 9811370580, 503527

SHOCK ABSORBER MOUNTING, FRONT, LEFT

FI1106



COMPATIBLE VEHICLES :
 NEMO Station wagon 2009-
 NEMO Furgonato (AA_) 2008-

OEM NO : 51839975, 51804747, 51855157, 51890881, 51928747

SHOCK ABSORBER MOUNTING, FRONT, RIGHT

FI1107



COMPATIBLE VEHICLES :
 NEMO Furgonato (AA_) 2008-
 NEMO Station wagon 2009-

OEM NO : 51839931, 51804748, 51855158, 51890880, 51929745

SHOCK ABSORBER MOUNTING

PE1002



COMPATIBLE VEHICLES :
 C4 I (LC_) 2004-2011
 C4 Coupe (LA_) 2004-2011

OEM NO : 5142.32, 5142.31, 5142.30, 9658295680, 9654515580

FRONT STRUT MOUNTING

PE1017



COMPATIBLE VEHICLES :
 C5 III (RD_) 2008-2015
 C5 III Break (TD_) 2008-

OEM NO : 5038.E6, 5038.A6

SHOCK ABSORBER MOUNTING

PE1019



COMPATIBLE VEHICLES :

C2 (JM_) 2003-2012
C3 I (FC_) 2002-

OEM NO : 5038.F5, 5038.A9

SHOCK ABSORBER MOUNTING, WITH BEARING

PE1019-B



COMPATIBLE VEHICLES :

C2 (JM_) 2003-2012
C3 I (FC_) 2002-

OEM NO : 5038.F5, 5038.A9

SHOCK ABSORBER MOUNTING (KIT)

PE1019-K



COMPATIBLE VEHICLES :

C3 I (FC_) 2002-
C2 (JM_) 2003-2012

OEM NO : 5038.F5, 5038.A9

SHOCK ABSORBER MOUNTING

PE1020



COMPATIBLE VEHICLES :

BERLINGO Box (B9) 2008-
BERLINGO (B9) 2008-
C4 I (LC_) 2004-2011
C4 Coupe (LA_) 2004-2011

OEM NO : 5038.G4, 5038.46, 9813916080

SHOCK ABSORBER MOUNTING, WITH BEARING

PE1020-B



COMPATIBLE VEHICLES :

BERLINGO (B9) 2008-
BERLINGO Box (B9) 2008-
C4 Coupe (LA_) 2004-2011
C4 I (LC_) 2004-2011

OEM NO : 5038.G4, 5038.46

SHOCK ABSORBER MOUNTING (KIT)

PE1020-K



COMPATIBLE VEHICLES :

C4 Coupe (LA_) 2004-2011
C4 I (LC_) 2004-2011
BERLINGO (B9) 2008-
BERLINGO Box (B9) 2008-

OEM NO : 5038.G4, 5038.46

SHOCK ABSORBER MOUNTING

PE1022



COMPATIBLE VEHICLES :

DS3 Cabriolet 2013-
DS3 2009-2015
C3 PICASSO (SH_) 2009-2013
C3 II (SC_) 2009-
C-ELYSEE (DD_) 2012-2017

OEM NO : 5038.H4, 9670830780

SHOCK ABSORBER MOUNTING, WITH BEARING

PE1022-B



COMPATIBLE VEHICLES :

DS3 Cabriolet 2013-
DS3 2009-2015
C3 PICASSO (SH_) 2009-2013
C3 II (SC_) 2009-
C-ELYSEE (DD_) 2012-2017

OEM NO : 5038.H4, 5038.H4 S1, 9670830780

SHOCK ABSORBER MOUNTING (KIT)

PE1022-K



COMPATIBLE VEHICLES :

DS3 Cabriolet 2013-
DS3 2009-2015
C3 PICASSO (SH_) 2009-2013
C3 II (SC_) 2009-
C-ELYSEE (DD_) 2012-2017

OEM NO : 5038.H4, 5038.H4 S1, 9670830780

SHOCK ABSORBER MOUNTING

PE1023



COMPATIBLE VEHICLES :

DS5 2011-2015
BERLINGO Box (B9) 2008-
BERLINGO (B9) 2008-
C4 I (LC_) 2004-2011
C4 Coupe (LA_) 2004-2011

OEM NO : 9804776380, 9821040880

SHOCK ABSORBER MOUNTING, WITH BEARING

PE1023-B



COMPATIBLE VEHICLES :
BERLINGO (B9) 2008-
BERLINGO Box (B9) 2008-
C4 Coupe (LA_) 2004-2011
C4 I (LC_) 2004-2011

OEM NO : 9804776380 , 9821040880

SHOCK ABSORBER MOUNTING (KIT)

PE1023-K



COMPATIBLE VEHICLES :
DS5 2011-2015
BERLINGO Box (B9) 2008-
BERLINGO (B9) 2008-
C4 I (LC_) 2004-2011
C4 Coupe (LA_) 2004-2011

OEM NO : 9804776380, 9821040880

SHOCK ABSORBER MOUNTING

PE1024



COMPATIBLE VEHICLES :
DS3 Cabriolet 2013-
DS3 2009-2015
C4 CACTUS 2014-
C3 PICASSO (SH_) 2009-2013
C3 II (SC_) 2009-

OEM NO : 5038.G6, 5031.F2, 9683738980

SHOCK ABSORBER MOUNTING, WITH BEARING

PE1024-B



COMPATIBLE VEHICLES :
DS3 Cabriolet 2013-
DS3 2009-2015
C4 CACTUS 2014-
C3 PICASSO (SH_) 2009-2013
C3 II (SC_) 2009-

OEM NO : 5038.G6, 5031.F2, 5031.F2 SK, 9683738980

SHOCK ABSORBER MOUNTING (KIT)

PE1024-K



COMPATIBLE VEHICLES :
DS3 Cabriolet 2013-
DS3 2009-2015
C4 CACTUS 2014-
C3 PICASSO (SH_) 2009-2013
C3 II (SC_) 2009-

OEM NO : 5038.G6, 5031.F2, 5031.F2 SK, 9683738980

SHOCK ABSORBER MOUNTING

PE1025



COMPATIBLE VEHICLES :
C4 Coupe (LA_) 2004-2011
C4 I (LC_) 2004-2011
C4 Picasso I (UD_) 2007-
C4 Picasso II 2013-
C4 Grand Picasso I (UA_) 2006-2011

OEM NO : 5038.F7, 5038.G0, 5038.85, 96 813 309 80, 5031.77

SHOCK ABSORBER MOUNTING, WITH BEARING

PE1025-B



COMPATIBLE VEHICLES :
C4 Picasso II 2013-
C4 Picasso I (UD_) 2007-
C4 I (LC_) 2004-2011
C4 Grand Picasso I (UA_) 2006-2011
C4 Coupe (LA_) 2004-2011

OEM NO : 5038.F7, 5038.G0, 5038.85, 96 813 309 80, 5031.77

SHOCK ABSORBER MOUNTING (KIT)

PE1025-K



COMPATIBLE VEHICLES :
C4 Coupe (LA_) 2004-2011
C4 I (LC_) 2004-2011
C4 Picasso I (UD_) 2007-
C4 Picasso II 2013-
C4 Grand Picasso I (UA_) 2006-2011

OEM NO : 5038.F7, 5038.G0, 5038.85, 96 813 309 80, 5031.77

SHOCK ABSORBER MOUNTING, FRONT

PE896



COMPATIBLE VEHICLES :
C15 (VD_) 1984-2005
VISA 16 GTI 1985-1986
VISA 17 1984-1991

OEM NO : 5037.20

SHOCK ABSORBER MOUNTING, FRONT

PE897



COMPATIBLE VEHICLES :
C15 (VD_) 1984-2005
VISA 1982-1991

OEM NO : 5037.33

REAR SUSPENSION SHOCK ABSORBER

PE900



COMPATIBLE VEHICLES :
XANTIA (X2) 1999-2003
XANTIA Break (X2) 1999-2003
XSARA (N1) 1997-2005
XSARA Break (N2) 1997-2005
XSARA Coupe (N0) 1998-2005

OEM NO : 5131.71, 96061864

SHOCK ABSORBER RUBBER,KIT

RE715-K



COMPATIBLE VEHICLES :
ZX Break (N2) 1993-1999
ZX (N2) 1991-1999
XSARA PICASSO (N68) 1999-
XSARA Furgonato 2000-2005
XSARA Coupe (N0) 1998-2005

OEM NO : 7700757324, 7700757324S, 5035.27, 5035.19, 5035.58

BUSH FOR WISHBONE

CI041



COMPATIBLE VEHICLES :
C6 2005-2012
C5 II Break (RE_) 2004-2008
C5 II (RC_) 2004-2008

OEM NO : 3520.N6*, 3521.J6*, 3520.Q1*, 3520.Q1 SK, 3520.W2*

BUSH FOR TRACK CONTROL ARM, CENTER

CI109



COMPATIBLE VEHICLES :
XANTIA Break (X2) 1999-2003
C5 III Break (TD_) 2008-
C5 III (RD_) 2008-2015
C5 II Break (RE_) 2004-2008
C5 II (RC_) 2004-2008

OEM NO : 3523.84, 3523.87

BUSH FOR WISHBONE, CENTER

CI114



COMPATIBLE VEHICLES :
C2 (JM_) 2003-2012
C3 I (FC_) 2002-
C3 Pluriel (HB_) 2004-

OEM NO : 3523.98, 9636191080

BUSH FOR WISHBONE, REAR

CI115



COMPATIBLE VEHICLES :
C2 (JM_) 2003-2012
C3 I (FC_) 2002-
C3 Pluriel (HB_) 2004-

OEM NO : 3523.AA, 3523.AT, 3523.99, 9640877080

BUSH FOR WISHBONE

CI118



COMPATIBLE VEHICLES :
C5 II (RC_) 2004-2008
C5 II Break (RE_) 2004-2008
C5 III (RD_) 2008-2015
C5 III Break (TD_) 2008-
C6 2005-2012

OEM NO : 3520.W1*, 3520.W2*, 3520.N8*, 3520.Q1*, 9663980680*

BUSH FOR WISHBONE

CI119



COMPATIBLE VEHICLES :
C5 III Break (TD_) 2008-
C5 III (RD_) 2008-2015
C5 II Break (RE_) 2004-2008
C5 II (RC_) 2004-2008

OEM NO : 3520.X6*, 9666244080*, 3521.T7*

BUSH FOR WISHBONE, BIG

CI120



COMPATIBLE VEHICLES :
C5 I (DC_) 2001-2004
C5 I Break (DE_) 2001-2004
C5 II (RC_) 2004-2008
C5 II Break (RE_) 2004-2008

OEM NO : 3523.95, 3523.AR

BUSH FOR WISHBONE

CI121



COMPATIBLE VEHICLES :
DS3 2009-2015
C4 CACTUS 2014-
C3 PICASSO (SH_) 2009-2013
C3 II (SC_) 2009-

OEM NO : 3523.EC, 3523.EE, 3523EC, 3523EE, 3520 T5*

BUSH FOR WISHBONE

CI122



COMPATIBLE VEHICLES :

C3 II (SC_) 2009-
C3 PICASSO (SH_) 2009-2013
C4 CACTUS 2014-
DS3 2009-2015

OEM NO : 3523.CZ, 3523.EA, 3523CZ, 3523EA, 3520 W7*

BUSH FOR WISHBONE

CI123



COMPATIBLE VEHICLES :

C6 2005-2012
C5 III Break (TD_) 2008-
C5 III (RD_) 2008-2015

OEM NO : 3523.AQ, 9687381780

CONTROL ARM BUSHING

CI124



COMPATIBLE VEHICLES :

C4 Grand Picasso II 2013-
C4 Picasso II 2013-

OEM NO : 96 760 321 80, 3 637 432, 9678311280*, 9678311380*,

BUSH FOR WISHBONE

CI125



COMPATIBLE VEHICLES :

C4 Picasso II 2013-
C4 Grand Picasso II 2013-

OEM NO : 9676035280, 98 078 923 80, 9678311280*, 9678311380*

WISHBONE ARM BUSH BIG, INNER

FI1108



COMPATIBLE VEHICLES :

EVASION (22,U6) 1994-2002
EVASION (22,U6) 1994-2002
JUMPY 2007-
JUMPY Box 2007-
JUMPY Box (BS_,BT_,BY_,BZ_) 1994-

OEM NO : 1305551080*, 1305552080*

BIG BUSH FOR WISHBONE, LEFT

FI1121



COMPATIBLE VEHICLES :

C8 (EA_,EB_) 2002-
EVASION (22,U6) 1994-2002
JUMPY 2007-
JUMPY Box 2007-

OEM NO : 1497408080*, 1497407080*, 3520.R8*, 3521.N9*

BIG BUSH FOR WISHBONE, RIGHT

FI1122



COMPATIBLE VEHICLES :

C8 (EA_,EB_) 2002-
EVASION (22,U6) 1994-2002
JUMPY 2007-
JUMPY Box 2007-

OEM NO : 1497408080*, 1497407080*, 3520.R8*, 3521.N9*

SMALL BUSH FOR WISHBONE

FI1123



COMPATIBLE VEHICLES :

C8 (EA_,EB_) 2002-
EVASION (22,U6) 1994-2002
JUMPY 2007-
JUMPY Box 2007-

OEM NO : 1497408080*, 1497407080*, 3520.R8*, 3521.N9*

BIG BUSH FOR TRACK CONTROL ARM (INNER)

FI893



COMPATIBLE VEHICLES :

C8 (EA_,EB_) 2002-
EVASION (22,U6) 1994-2002
JUMPY 2007-
JUMPY Box 2007-

OEM NO : 1497408080*, 1497407080*, 3520.R8*, 3521.N9*

BIG BUSH FOR WISHBONE, LEFT

FI894



COMPATIBLE VEHICLES :

EVASION (22,U6) 1994-2002
JUMPY 2007-
JUMPY Box (BS_,BT_,BY_,BZ_) 1994-
JUMPY Platform/Chassis
(BU_,BV_,BW_,BX_) 1999-2006

OEM NO : 1305551080

BIG BUSH FOR WISHBONE, RIGHT

FI895



COMPATIBLE VEHICLES :
EVASION (22,U6) 1994-2002
JUMPY 2007-
JUMPY Box (BS_,BT_,BY_,BZ_) 1994-
JUMPY Platform/Chassis
(BU_,BV_,BW_,BX_) 1999-2006

OEM NO : 1305552080

SMALL BUSH FOR WISHBONE

FI896



COMPATIBLE VEHICLES :
EVASION (22,U6) 1994-2002
JUMPY Box (BS_,BT_,BY_,BZ_) 1994-
JUMPY Platform/Chassis
(BU_,BV_,BW_,BX_) 1999-2006
XANTIA (X2) 1999-2003

OEM NO : 1312317080

SMALL BUSH FOR TRACK CONTROL ARM

FI896A



COMPATIBLE VEHICLES :
EVASION (22,U6) 1994-2002
JUMPY Box (BS_,BT_,BY_,BZ_) 1994-
JUMPY Platform/Chassis
(BU_,BV_,BW_,BX_) 1999-2006
XANTIA (X2) 1999-2003

OEM NO : 1312317080*, 3520.G9*, 1316735080*

BUSH FOR LOWER WISHBONE, BIG

FI928



COMPATIBLE VEHICLES :
NEMO Box (AA_) 2008-
NEMO Estate 2009-

OEM NO : 77363827, 3528.64, 55700751, 77363829, 55703629*

BUSH FOR LOWER WISHBONE, SMALL

FI929

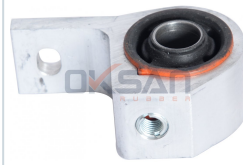


COMPATIBLE VEHICLES :
NEMO Box (AA_) 2008-
NEMO Estate 2009-

OEM NO : 55703232, 0352380, 55703629*, 55703627*, 51783057*

CONTROL ARM BUSHING

PE008



COMPATIBLE VEHICLES :
BERLINGO (MF) 1996-
BERLINGO Furgonato (M_) 1996-
XSARA PICASSO (N68) 1999-
XSARA Furgonato 2000-2005

OEM NO : 3523.83, 96117499

CONTROL ARM BUSHING,BIG

PE057



COMPATIBLE VEHICLES :
C1 2005-

OEM NO : 3520.Q2*, 3521.L3*, 48068-0H010, 48069-0H010, 48655-

CONTROL ARM BUSHING, SMALL

PE058



COMPATIBLE VEHICLES :
C1 2005-

OEM NO : 3520.Q2*, 3521.L3*, 48068-0H010, 48069-0H010, 48655-

BUSH FOR LOWER WISHBONE, CENTER

PE1000



COMPATIBLE VEHICLES :
C-ELYSEE (DD_) 2012-2017
C3 III (SX) 2016-
C3 PICASSO (SH_) 2009-2013

OEM NO : 3523.CE, 96 585 835 80, 96 770 405 80, 3520 R7*, 3520

BUSH FOR LOWER WISHBONE, REAR

PE1001



COMPATIBLE VEHICLES :
C3 PICASSO (SH_) 2009-2013
C-ELYSEE (DD_) 2012-2017

OEM NO : 3523.CC, 96 770 410 80, 96 806 138 80, 3520 R7*, 3520

WISHBONE ARM BUSH, SMALL

PE1005



COMPATIBLE VEHICLES :
JUMPER Bus (230P) 1994-2002
JUMPER Box (230L) 1994-2002

OEM NO : 50705197, 1352225080*, 1352226080*, 1352227080*,

WISHBONE ARM BUSH, BIG

PE1006



COMPATIBLE VEHICLES :
JUMPER Bus (230P) 1994-2002
JUMPER Box (230L) 1994-2002

OEM NO : 50705198, 1352225080*, 1352226080*, 1352227080*,

WISHBONE ARM BUSH, SMALL

PE1008



COMPATIBLE VEHICLES :
SAXO (S0,S1) 1996-2003
AX (ZA_) 1986-1998

OEM NO : 3523.52, 95603308, 96113432, 3523.64

WISHBONE ARM BUSH, BIG

PE1009



COMPATIBLE VEHICLES :
AX (ZA_) 1986-1998
SAXO (S0,S1) 1996-2003

OEM NO : 3523.51, 96106474, 3523.65

WISHBONE ARM BUSH, BIG

PE1010



COMPATIBLE VEHICLES :
AX (ZA_) 1986-1998

OEM NO : 3523.53, 96148480, 96050338

WISHBONE ARM BUSH, SMALL

PE1011



COMPATIBLE VEHICLES :
JUMPER Box (230L) 1994-2002
JUMPER Bus (230P) 1994-2002
JUMPER Bus (244, Z_) 2002-
JUMPER Furgonato (244) 2002-
JUMPER Pianele piatto/Telaio (230)

OEM NO : 1300507080, 1320348080, 1320756080, 1320756080SK,

WISHBONE ARM BUSH, SMALL (KIT)

PE1011-K



COMPATIBLE VEHICLES :
JUMPER Pianele piatto/Telaio (230)
1994-2002
JUMPER Furgonato (244) 2002-
JUMPER Bus (244, Z_) 2002-
JUMPER Bus (230P) 1994-2002

OEM NO : 1300507080, 1320348080, 1320756080, 1320756080SK,

WISHBONE ARM BUSH, BIG

PE1012



COMPATIBLE VEHICLES :
JUMPER Box (230L) 1994-2002
JUMPER Bus (230P) 1994-2002
JUMPER Bus (244, Z_) 2002-
JUMPER Furgonato (244) 2002-
JUMPER Pianele piatto/Telaio (230)

OEM NO : 1308694080, 1338373080, 1320755080, 1320755080SK,

WISHBONE ARM BUSH FRONT

PE1013



COMPATIBLE VEHICLES :
C5 III (RD_) 2008-2015
C5 III Break (TD_) 2008-
C6 2005-2012

OEM NO : 3523.CA, 3523.AV, 96561670, 95561670

SUPPORT ARM BUSH FRONT

PE1014



COMPATIBLE VEHICLES :
C6 2005-2012
C5 III Break (TD_) 2008-
C5 III (RD_) 2008-2015

OEM NO : 3523.AZ, 3523.AL, 3523.AW, 3523.AX

BUSH FOR CONTROL ARM REAR

PE1015



COMPATIBLE VEHICLES :
C5 III (RD_) 2008-2015
C5 III Break (TD_) 2008-
C6 2005-2012

OEM NO : 5175.CF*

BUSH FOR WISHBONE, SMALL

PE1031



COMPATIBLE VEHICLES :
C-CROSSER ENTERPRISE 2009-
C-CROSSER (EP_) 2007-

OEM NO : 1612448380*, 1612448480*, 1612753380*, 1612753580*,

BUSH FOR WISHBONE, BIG

PE1032



COMPATIBLE VEHICLES :
C-CROSSER (EP_) 2007-
C-CROSSER ENTERPRISE 2009-

OEM NO : 1609910680, 1612448580*, 3520-V0*, 3523CS

WISHBONE ARM BUSH KIT

PE1034-K



COMPATIBLE VEHICLES :
C-CROSSER (EP_) 2007-
C-CROSSER ENTERPRISE 2009-

OEM NO : 1612448380*, 1612448480*, 1612753380*, 1612753580*,

BUSH FOR LOWER WISHBONE, REAR

PE619



COMPATIBLE VEHICLES :
VISA 1982-1991

OEM NO : 3523.31, 91515872, 3523.71

BUSH FOR LOWER TRACK CONTROL ARM,

PE886



COMPATIBLE VEHICLES :
C15 (VD_) 1984-2005
VISA 1982-1991
VISA II Super X 1980-1982

OEM NO : 3523.20, 91504247, 3523.70, 3523.73, 5323.29

BUSH FOR LOWER TRACK CONTROL ARM,

PE887



COMPATIBLE VEHICLES :
VISA 17 1984-1991
VISA 1982-1991
C15 (VD_) 1984-2005

OEM NO : 3523.49, 91515653, 3523.29, 3523.27

BUSH FOR TRACK CONTROL ARM, REAR

PE892



COMPATIBLE VEHICLES :
C4 Coupe (LA_) 2004-2011
C4 I (LC_) 2004-2011

OEM NO : 3523.77, 3523.92, 96286665, 3521C8*

BUSH FOR TRACK CONTROL ARM, CENTER

PE893



COMPATIBLE VEHICLES :
C4 I (LC_) 2004-2011
C4 Coupe (LA_) 2004-2011

OEM NO : 3523.76, 3830.07, 96239153, 3521C8*

SMALL BUSH FOR LOWER WISHBONE

PE894



COMPATIBLE VEHICLES :
BERLINGO (MF) 1996-
BERLINGO Furgonato (M_) 1996-
XANTIA (X2) 1999-2003
XANTIA Break (X2) 1999-2003
XSARA (N1) 1997-2005

OEM NO : 96110483, 96011483, 3520.H6*, 3521.E6*, 3520.H4*

SMALL BUSH FOR WISHBONE (KIT)

PE894-K



COMPATIBLE VEHICLES :

BERLINGO (MF) 1996-
BERLINGO Furgonato (M_) 1996-
XANTIA (X2) 1999-2003
XANTIA Break (X2) 1999-2003
XSARA (N1) 1997-2005

OEM NO : 96110483, 96011483, 3520.H6*, 3521.E6*, 3520.H4*

BIG BUSH FOR LOWER WISHBONE

PE895



COMPATIBLE VEHICLES :

BERLINGO (MF) 1996-
BERLINGO Furgonato (M_) 1996-
XANTIA (X2) 1999-2003
XANTIA Break (X2) 1999-2003
XSARA (N1) 1997-2005

OEM NO : 3523.75, 3523.62, 3523.59, 96097927, 1215144

BUSH FOR WISHBONE, CENTER

PE89D



COMPATIBLE VEHICLES :

VISA 16 GTI 1985-1986

OEM NO : 3523.23, 3523.72

SMALL BUSH FOR WISHBONE, CENTER

PE903



COMPATIBLE VEHICLES :

SAXO (S0,S1) 1996-2003
AX (ZA-) 1986-1998

OEM NO : 3523.50, 95603308, 3523.66

BUSH FOR LOWER WISHBONE, CENTER

PE999



COMPATIBLE VEHICLES :

C4 I (LC_) 2004-2011
C4 Coupe (LA_) 2004-2011

OEM NO : 3523.91, 9634862780, 3523.CW, 3523CW, 3523AJ

CLUTCH FORK

CI056



COMPATIBLE VEHICLES :

JUMPY Platform/Chassis
(BU_,BV_,BW_,BX_) 1999-2006
JUMPY Furgonato 2007-
JUMPY Box (BS_,BT_,BY_,BZ_) 1994-
JUMPY Box 2007-

OEM NO : 2117.66, 9651703088

STEERING BOOT, RIGHT

CI024



COMPATIBLE VEHICLES :

C15 (VD-) 1984-2005
C15 Station Wagon 1987-1996
BERLINGO (MF) 1996-
BERLINGO Furgonato (M_) 1996-
ZX (N2) 1991-1999

OEM NO : 4066.20

STEERING BOOT, LEFT

CI025



COMPATIBLE VEHICLES :

C15 (VD-) 1984-2005
C15 Station Wagon 1987-1996
BERLINGO (MF) 1996-
BERLINGO Furgonato (M_) 1996-
ZX (N2) 1991-1999

OEM NO : 4066.22

STEERING BOOT

CI046



COMPATIBLE VEHICLES :

C4 Coupe (LA_) 2004-2011
C4 I (LC_) 2004-2011
C4 II (B7) 2009-

OEM NO : 4066.57, 4066.73, 4066.64

STEERING BOOT

CI049



COMPATIBLE VEHICLES :

XM (Y3) 1989-1994
XANTIA Break (X1_, X2_) 1995-2003
XANTIA (X1_, X2_) 1993-2003
XM (Y4) 1994-2000
XM Break (Y3) 1991-1994

OEM NO : 4066.29, 4066.37

STEERING BOOT

CI067



COMPATIBLE VEHICLES :
JUMPER Pianele piatto/Telaio 2006-
JUMPER Furgonato 2006-

OEM NO : 4066.86, 1610976280, 1376348080, 77364254

STEERING BOOT

FI023



COMPATIBLE VEHICLES :
NEMO Box (AA_) 2008-
NEMO Estate 2009-
NEMO Furgonato (AA_) 2008-
NEMO Station wagon 2009-

OEM NO : 77364571, 406695, 77363828, 1609347, 93189041

STEERING BOOT

FI030



COMPATIBLE VEHICLES :
JUMPER Bus (230P) 1994-2002
JUMPER Pianele piatto/Telaio (230)
1994-2002

OEM NO : 4066.35, 9941077, 9945837, 4006.22, 4066.31

STEERING BOOT, HYDRAULIC, LONG

FO093



COMPATIBLE VEHICLES :
JUMPY Platform/Chassis
(BU_, BV_, BW_, BX_) 1999-2006
JUMPY (U6U_) 1995-2006
EVASION Van (U6_, AF_) 1994-2002
EVASION MPV (22, U6) 1994-2002

OEM NO : 4059921, YC15-3K661-AA, YC153K661AA

STEERING BOOT, RIGHT

PE149



COMPATIBLE VEHICLES :
C6 2005-2012

OEM NO : 4066.71

STEERING BOOT

PE152



COMPATIBLE VEHICLES :
C3 PICASSO (SH_) 2009-2013
C-ELYSEE (DD_) 2012-2017
DS3 (SA_) 2009-2015
DS3 Cabrio 2013-2015

OEM NO : 16 086 520 80, 4066.80

EXHAUST RUBBER

CI074



COMPATIBLE VEHICLES :
VISA II Super X 1980-1982
VISA 17 1984-1991
VISA 16 GTI 1985-1986
VISA 1982-1991
JUMPER Bus (230P) 1994-2002

OEM NO : 1755.60, 82409205, 7610077, 60806026, 60801631

EXHAUST RUBBER

PE056



COMPATIBLE VEHICLES :
NEMO Station wagon 2009-
NEMO Furgonato (AA_) 2008-
NEMO Estate 2009-

OEM NO : 1755.F1, 1755.E9, 1755.65, 46546376, 46529211

ENGINE MOUNTING

CI004



COMPATIBLE VEHICLES :
DS3 Cabriolet 2013-
DS3 2009-2015
C3 PICASSO (SH_) 2009-2013
C3 Pluriel (HB_) 2004-
C3 II (SC_) 2009-

OEM NO : 1806.A6, 1806.J8, 1806.82, 1806.93

ENGINE MOUNTING

CI005



COMPATIBLE VEHICLES :
C5 II (RC_) 2004-2008
C5 II Break (RE_) 2004-2008

OEM NO : 1807.Y3

ENGINE MOUNTING (HYDRAULIC)

CI006



COMPATIBLE VEHICLES :
C8 (EA_,EB_) 2002-
C5 III Break (TD_) 2008-
C5 III (RD_) 2008-2015
C5 II Break (RE_) 2004-2008
C5 II (RC_) 2004-2008

OEM NO : 1844.91, 1844.C0, 1844.92, 1844.93

ENGINE MOUNTING (LEFT)

CI007



COMPATIBLE VEHICLES :
BX (XB_) 1983-1993
BX Break (XB_) 1983-1994
C15 (VD_) 1984-2005
C15 Station Wagon 1987-1996
SAXO (S0,S1) 1996-2003

OEM NO : 1843.95, 1843.55, 1843.82, 96033565

ENGINE MOUNTING

CI008



COMPATIBLE VEHICLES :
BERLINGO (MF) 1996-
BERLINGO Furgonato (M_) 1996-
XANTIA (X1) 1993-1998
XANTIA (X2) 1999-2003
XANTIA Break (X1) 1995-1998

OEM NO : 1844.25

ENGINE MOUNTING

CI009



COMPATIBLE VEHICLES :
XSARA PICASSO (N68) 1999-
XSARA Furgonato 2000-2005
XSARA Coupe (N0) 1998-2005
XSARA Break (N2) 1997-2005
XSARA (N1) 1997-2005

OEM NO : 1844.A7, 1844.88

ENGINE MOUNTING (RIGHT)

CI010

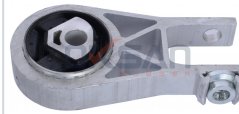


COMPATIBLE VEHICLES :
JUMPER Pianele piatto/Telaio (230)
1994-2002
JUMPER Pianele piatto/Telaio 2006-
JUMPER Furgonato (244) 2002-
JUMPER Furgonato 2006-

OEM NO : 1846.66, 1308696080

ENGINE MOUNTING

CI013



COMPATIBLE VEHICLES :
JUMPER Pianele piatto/Telaio 2006-
JUMPER Furgonato (244) 2002-
JUMPER Furgonato 2006-
JUMPER Bus (244, Z_) 2002-
JUMPER Bus 2006-

OEM NO : 1806.95, 1806.90, 16 317 241 80, 1352887080, 71753298

TRANSMISSION MOUNTING BUSH

CI018



COMPATIBLE VEHICLES :
BERLINGO Furgonato (M_) 1996-
BERLINGO (MF) 1996-
BERLINGO Box (B9) 2008-
BERLINGO (B9) 2008-
AX (ZA_) 1986-1998

OEM NO : 1809.33, 1809.30, 96 391 768 47, 1809.35

ENGINE SUPPORT ARM

CI027



COMPATIBLE VEHICLES :
C5 I (DC_) 2001-2004
C5 I Break (DE_) 2001-2004
C5 II (RC_) 2004-2008
C5 II Break (RE_) 2004-2008
EVASION (22,U6) 1994-2002

OEM NO : 1806.28, 9631575180, 1806.74

ENGINE MOUNTING

CI031



COMPATIBLE VEHICLES :
JUMPY Platform/Chassis
(BU_,BV_,BW_,BX_) 1999-2006
JUMPY Box (BS_,BT_,BY_,BZ_) 1994-
C8 (EA_,EB_) 2002-

OEM NO : 1806.43, 9401806349

ENGINE MOUNTING

CI040



COMPATIBLE VEHICLES :
C5 II (RC_) 2004-2008
C5 III (RD_) 2008-2015

OEM NO : 1806.69, 1806.J9

ENGINE MOUNTING, SMALL

CI053



COMPATIBLE VEHICLES :

DS3 2009-2015
C3 Pluriel (HB_) 2004-
C3 PICASSO (SH_) 2009-2013
C3 II (SC_) 2009-
C3 I (FC_) 2002-

OEM NO : 9645688080*, 9681675280, 9653062280, 9802186880,

ENGINE MOUNTING

CI054



COMPATIBLE VEHICLES :

JUMPER Box (230L) 1994-2002
JUMPER Bus 2006-
JUMPER Bus (230P) 1994-2002
JUMPER Bus (244, Z_) 2002-
JUMPER Furgonato 2006-

OEM NO : 1335125080, 1335126080, 1807.S7

ENGINE MOUNTING

CI055



COMPATIBLE VEHICLES :

JUMPER Bus (244, Z_) 2002-

OEM NO : 1335129080, 1802.56, 1839.A6, 1335128080, 1335127080

ENGINE MOUNTING

CI058



COMPATIBLE VEHICLES :

NEMO Estate 2009-
NEMO Furgonato (AA_) 2008-
NEMO Station wagon 2009-

OEM NO : 51810285

ENGINE MOUNTING, HYDRAULIC

CI059



COMPATIBLE VEHICLES :

C3 PICASSO (SH_) 2009-2013
C3 Pluriel (HB_) 2004-
C3 II (SC_) 2009-
C3 I (FC_) 2002-
C-ELYSEE (DD_) 2012-2017

OEM NO : 1807.GW, 1807.AW

ENGINE MOUNTING

CI062



COMPATIBLE VEHICLES :

NEMO Box (AA_) 2008-

OEM NO : 1807.KE, 51855484

ENGINE MOUNTING

CI063



COMPATIBLE VEHICLES :

BERLINGO (B9) 2008-
BERLINGO Box (B9) 2008-
BERLINGO (MF) 1996-
BERLINGO Furgonato (M_) 1996-

OEM NO : 1807.GE

ENGINE MOUNTING

CI066



COMPATIBLE VEHICLES :

JUMPER Bus 2006-
JUMPER Furgonato 2006-
JUMPER Furgonato (244) 2002-
JUMPER Pianele piatto/Telaio 2006-

OEM NO : 1846.C1, 1352888080, 1352888080

ENGINE MOUNTING, LEFT

CI078



COMPATIBLE VEHICLES :

C5 III Break (TD_) 2008-
C5 III (RD_) 2008-2015
C5 II Break (RE_) 2004-2008
C5 II (RC_) 2004-2008

OEM NO : 1813.94

ENGINE MOUNTING

CI079



COMPATIBLE VEHICLES :

DS3 2009-2015
C3 Pluriel (HB_) 2004-
C3 PICASSO (SH_) 2009-2013
C3 II (SC_) 2009-
C3 I (FC_) 2002-

OEM NO : 1813.92, 1813.80, 9641949580, 9680293280


ENGINE MOUNTING **CI084**



COMPATIBLE VEHICLES :
 NEMO Station wagon 2009-
 NEMO Furgonato (AA_) 2008-
 NEMO Estate 2009-
 NEMO Box (AA_) 2008-

OEM NO : 1807.GL, 1807.GR, 51782160, 5176160, 51761609

ENGINE MOUNTING **CI099**



COMPATIBLE VEHICLES :
 JUMPER Bus (244, Z_) 2002-
 JUMPER Furgonato (244) 2002-

OEM NO : 1807.S7, 1335127080

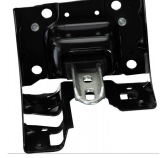
ENGINE MOUNTING **CI106**



COMPATIBLE VEHICLES :
 C4 PICASSO I MPV (UD_) 2007-2013
 C4 Grand Picasso I (UA_) 2006-2011
 C4 Coupe (LA_) 2004-2011
 C4 I (LC_) 2004-2011

OEM NO : 1839.H6, 1839.94

ENGINE MOUNTING **CI108**



COMPATIBLE VEHICLES :
 C4 II (NC_) 2009-2017
 C3 III Van (SX_, SY_) 2019-
 C3 III (SX) 2016-
 C3 II (SC_) 2009-
 C3 AIRCROSS II (2R_, 2C_) 2017-

OEM NO : 1813.L6, 1813.N5, 96 765 708 80, 98 066 589 80, 36 39


ENGINE MOUNTING **CI111**



COMPATIBLE VEHICLES :
 NEMO MPV 2009-

OEM NO : 1807.GP, 51799111


ENGINE MOUNTING **CI112**



COMPATIBLE VEHICLES :
 C5 Kombi van (DE_, RE_) 2004-2008
 C5 III Break (RW_) 2008-2015
 C5 I (DC_) 2001-2004
 C5 I Break (DE_) 2001-2004
 C5 II (RC_) 2004-2008

OEM NO : 1813.96, 1813.98

ENGINE MOUNTING FRONT,RIGHT **CI113**



COMPATIBLE VEHICLES :
 DS3 Cabrio 2013-2015
 DS3 (SA_) 2009-2015
 C4 CACTUS 2014-
 C3 III Van (SX_, SY_) 2019-
 C3 III (SX) 2016-

OEM NO : 96 767 805 80

ENGINE MOUNTING **FI034**



COMPATIBLE VEHICLES :
 NEMO Box (AA_) 2008-

OEM NO : 51855676, 1807.KA

ENGINE MOUNTING **FI045**



COMPATIBLE VEHICLES :
 NEMO Box (AA_) 2008-
 NEMO Estate 2009-
 NEMO Furgonato (AA_) 2008-
 NEMO Station wagon 2009-

OEM NO : 51821084, 51782185, 1807.GQ

ENGINE MOUNTING **FI083**



COMPATIBLE VEHICLES :
 NEMO Box (AA_) 2008-
 NEMO MPV 2009-

OEM NO : 1844.C6, 51805434, 51805435, 1844.C7

ENGINE MOUNTING

FI150



COMPATIBLE VEHICLES :
NEMO MPV 2009-

OEM NO : 51855515, 1807KF

ENGINE MOUNTING

PE026



COMPATIBLE VEHICLES :
C4 Coupe (LA_) 2004-2011
C4 I (LC_) 2004-2011
BERLINGO (B9) 2008-
BERLINGO Box (B9) 2008-

OEM NO : 1807.X2, 1807.GF, 1807GF

ENGINE MOUNTING

PE031



COMPATIBLE VEHICLES :
C-ELYSEE (DD_) 2012-2017
C3 I (FC_) 2002-
C3 II (SC_) 2009-

OEM NO : 1839.J3, 1839.F7

ENGINE MOUNTING

PE054



COMPATIBLE VEHICLES :
SPACETOURER Bus (V_) 2016-
GRAND C4 SPACETOURER (3A_,
3E_) 2018-
C4 SPACETOURER (3D_) 2018-
C3 AIRCROSS II (2R_, 2C_) 2017-

OEM NO : 98 057 347 80, 98 088 386 80

ENGINE MOUNTING

PE061



COMPATIBLE VEHICLES :
DS3 Cabriolet 2013-
DS3 2009-2015
C4 CACTUS 2014-
C3 II (SC_) 2009-

OEM NO : 9688824180

ENGINE MOUNTING

PE063



COMPATIBLE VEHICLES :
C3 II (SC_) 2009-
C3 PICASSO (SH_) 2009-2013
DS3 Cabriolet 2013-

OEM NO : 1839.J2, 1839.F4

ENGINE MOUNTING BUSHING

PE065



COMPATIBLE VEHICLES :
C4 I (LC_) 2004-2011
BERLINGO Box (B9) 2008-
BERLINGO (B9) 2008-

OEM NO : 1809.44, 1807.HC

ENGINE MOUNTING (HYDRAULIC)

PE1026-H



COMPATIBLE VEHICLES :
XSARA PICASSO (N68) 1999-
XSARA Furgonato 2000-2005
XSARA Coupe (N0) 1998-2005
XSARA Break (N2) 1997-2005
XSARA (N1) 1997-2005

OEM NO : 1843.92, 1843.73, 1843.92, 1844.42

ENGINE MOUNTING (HYDRAULIC)

PE1027-H



COMPATIBLE VEHICLES :
AX (ZA_) 1986-1998
BX (XB_) 1983-1993
BX Break (XB_) 1983-1994
BERLINGO (MF) 1996-
BERLINGO Furgonato (M_) 1996-

OEM NO : 1844.47, 1844.77, 1827.23, 1827.24

ENGINE MOUNTING

PE1029



COMPATIBLE VEHICLES :
BX (XB_) 1983-1993
BX Break (XB_) 1983-1994
C4 Coupe (LA_) 2004-2011
C4 I (LC_) 2004-2011
C4 Picasso I (UD_) 2007-

OEM NO : 1844.51


ENGINE MOUNTING **PE1030**



COMPATIBLE VEHICLES :
DS3 2009-2015
C3 I (FC_) 2002-
C2 (JM_) 2003-2012

OEM NO : 1806.59, 1806.96, 9645688080, 1806.84

ENGINE MOUNTING **PE1033**



COMPATIBLE VEHICLES :
AX (ZA_) 1986-1998
SAXO (S0,S1) 1996-2003

OEM NO : 1844.54

ENGINE MOUNTING **PE142**



COMPATIBLE VEHICLES :
C4 I (LC_) 2004-2011
C4 I Picasso 2007-2013

OEM NO : 1839.H5, 1839-HF, 1839.C7

ENGINE MOUNTING (HYDRAULIC) **PE144**



COMPATIBLE VEHICLES :
BERLINGO MULTISPACE (B9) 2008-
2016
C3 AIRCROSS II (2R_, 2C_) 2017-
C3 AIRCROSS II Van (2C_, 2R_) 2019-
C4 II (B7) 2009-

OEM NO : 9677258480


ENGINE MOUNTING **PE155**



COMPATIBLE VEHICLES :
C3 II (SC_) 2009-
C3 I (FC_, FN_) 2002-2005
C3 Pluriel (HB_) 2004-

OEM NO : 1807.HF, 1807.HX, 1807.S4, 1807.W6

ENGINE MOUNTING **PE156**



COMPATIBLE VEHICLES :
C5 AIRCROSS (A_) 2018-
BERLINGO (ER_, EC_) 2018-
JUMPY Panelvan/Van (V_) 2016-2018

OEM NO : 9811786680

ENGINE MOUNTING,RIGHT (HYDRAULIC) **PE157**



COMPATIBLE VEHICLES :
C4 I 2004-2014

OEM NO : 1839.J1, 1839.90


ENGINE MOUNTING,RIGHT (HYDRAULIC) **PE158**



COMPATIBLE VEHICLES :
C4 II (B7) 2009-
C4 I 2004-2014
DS4 2009-2015

OEM NO : 1839.H8, 1839.91


ENGINE MOUNTING,RIGHT (HYDRAULIC) **PE159**



COMPATIBLE VEHICLES :
C4 I 2004-2014
C4 II (B7) 2009-
Xsara 1997-2005
XSARA Break (N2) 1997-2005

OEM NO : 1839.H7, 1839.97

TRANSMISSION MOUNTING BUSH **PE888**

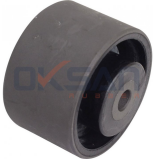


COMPATIBLE VEHICLES :
AX (ZA_) 1986-1998
BX (XB_) 1983-1993
BX Break (XB_) 1983-1994
C5 I (DC_) 2001-2004
C5 I Break (DE_) 2001-2004

OEM NO : 1809.16, 180916, 9606121080, 1809.21, 1809.29

TRANSMISSION MOUNTING BUSH, METAL

PE890



COMPATIBLE VEHICLES :

ZX Break (N2) 1993-1999
ZX (N2) 1991-1999
XSARA Coupe (N0) 1998-2005
XSARA Break (N2) 1997-2005
XSARA (N1) 1997-2005

OEM NO : 1807.57, 1807.56, 1807.P0

BUSH FOR ENGINE LINK, REAR

PE905



COMPATIBLE VEHICLES :

ZX Break (N2) 1993-1999
ZX (N2) 1991-1999
XSARA PICASSO (N68) 1999-
XSARA Furgonato 2000-2005
XSARA Coupe (N0) 1998-2005

OEM NO : 1809.04, 1809.06, 1806.08, 1806.14, 1806.16

ENGINE MOUNTING BACK,RIGHT

RE137



COMPATIBLE VEHICLES :

ZX Break (N2) 1993-1999
ZX (N2) 1991-1999
XSARA Coupe (N0) 1998-2005
XSARA Break (N2) 1997-2005

OEM NO : 7700825795, 7700825794

ENGINE MOUNTING

RE249



COMPATIBLE VEHICLES :

VISA 11 1982-1991
VISA 1982-1991
VISA 14 1982-1991
VISA 16 GTI 1985-1986
VISA 17 1984-1991

OEM NO : 184417, 184397, 91535412

BRAKE PEDAL TIRE

CI003



COMPATIBLE VEHICLES :

XANTIA (X1_, X2_) 1993-2003
C25 Panelvan/Van (280_, 290_) 1981-
1994
C25 Platform şasi (280_, 290_) 1987-
1994

OEM NO : 2012920082, 2E0721173

CLUTCH TIRE,NEW MODEL

CI128



COMPATIBLE VEHICLES :

ZX Break (N2) 1993-1999
XSARA Coupe (N0) 1998-2005
XSARA Break (N2) 1997-2005
XANTIA Break (X1) 1995-1998
XANTIA (X1) 1993-1998

OEM NO : 2130.15*

PEDAL RUBBER

FI104



COMPATIBLE VEHICLES :

JUMPER Panelvan/Van (230L) 2000-
2002

OEM NO : 1314352080, 450416

PEDAL RUBBER

MI014



COMPATIBLE VEHICLES :

JUMPER Panelvan/Van 2.0 BlueHDi
2006-2019
JUMPER Platform şasi 2.0 BlueHDi
2006-2019

OEM NO : 450432, 213039, 71747697

BRAKE PEDAL PAD

PE046



COMPATIBLE VEHICLES :

ZX (N2) 1991-1999
XSARA Break (N2) 1997-2005
XANTIA (X2) 1999-2003
JUMPY Box (BS_,BT_,BY_,BZ_) 1994-
EVASION (22,U6) 1994-2002

OEM NO : 2130.13

BRAKE PEDAL PAD (NEW MODEL)

PE047



COMPATIBLE VEHICLES :

C5 I (DC_) 2001-2004
C5 I Break (DE_) 2001-2004
C5 II (RC_) 2004-2008
C5 II Break (RE_) 2004-2008
BERLINGO (MF) 1996-

OEM NO : 4504.12

BRAKE PEDAL TIRE

PE131



COMPATIBLE VEHICLES :
XSARA (N1) 1997-2005
XANTIA (X1_, X2_) 1993-2003
JUMPY Platform/Chassis
(BU_, BV_, BW_, BX_) 1999-2006
JUMPY Panelvan/Van (BS_, BT_, BY_)

OEM NO : 450412, 9120804880

SHOCK ABSORBER BEARING

PE038



COMPATIBLE VEHICLES :
ZX Break (N2) 1993-1999
ZX (N2) 1991-1999
XSARA PICASSO (N68) 1999-
XSARA Furgonato 2000-2005
XSARA Coupe (N0) 1998-2005

OEM NO : 5035.27, 5035.58, 5035.63, 5035.19, 91510633

SHOCK ABSORBER BEARING

R012-S

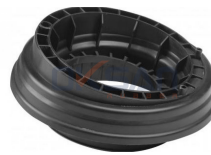


COMPATIBLE VEHICLES :
Relay II 2006-
Relay I 2002-2007
JUMPER I 2001-2006
Jumper II 2006-2019
Jumper III 2006-2014

OEM NO : 16 202 985 80, 5035.39, 11586424, 5035.56, 5035.61

SHOCK ABSORBER BEARING

R014-S



COMPATIBLE VEHICLES :
BERLINGO (ER_, EC_) 2018-
C4 GRAND PICASSO II (DA_, DE_)
2013-
C4 Picasso II 2013-
C5 AIRCROSS (A_) 2018-

OEM NO : 98 004 797 80, 36 37 402, 9800480380, 9817592480,

SHOCK ABSORBER BEARING ASSEMBLY

R017-S



COMPATIBLE VEHICLES :
Relay II 2006-
Jumper II 2006-2019

OEM NO : 16 127 359 80 SK1, 16 127 361 80 SK1, 1374667080 SK1,

GEARBOX MOUNTING

PE1028



COMPATIBLE VEHICLES :
C4 Coupe (LA_) 2004-2011
C4 I (LC_) 2004-2011
C4 Picasso I (UD_) 2007-
C4 Grand Picasso I (UA_) 2006-2011
C5 I (DC_) 2001-2004

OEM NO : 1827.10, 9604338880

RUBBER BUFFER,SUSPENSION

CI200



COMPATIBLE VEHICLES :
JUMPY Van 2007-
JUMPY 2007-

OEM NO : 516685

SUSPENSION MOUNTING, DUST COVER,KIT

PE053



COMPATIBLE VEHICLES :
JUMPER Bus (244, Z_) 2002-
JUMPER Bus (230P) 1994-2002

OEM NO : 5033.41, 1313045080, 1311247080

STABILIZER BAR RUBBER (Ø21)

CI002



COMPATIBLE VEHICLES :
BERLINGO (MF) 1996-
BERLINGO Furgonato (M_) 1996-
XSARA (N1) 1997-2005
XSARA Break (N2) 1997-2005
XSARA Coupe (N0) 1998-2005

OEM NO : 5094.65

STABILIZER BAR RUBBER (Ø18)

CI014



COMPATIBLE VEHICLES :
ZX Break (N2) 1993-1999
ZX (N2) 1991-1999
XSARA PICASSO (N68) 1999-
XSARA Furgonato 2000-2005
XSARA Coupe (N0) 1998-2005

OEM NO : 96158745, 5094.64

STABILIZER BAR RUBBER (Ø19)

CI016



COMPATIBLE VEHICLES :

C2 (JM_) 2003-2012
C3 I (FC_) 2002-
C3 Pluriel (HB_) 2004-

OEM NO : 5094.91

STABILIZER BAR RUBBER (Ø19/20)

CI021



COMPATIBLE VEHICLES :

C2 (JM_) 2003-2012
C3 I (FC_) 2002-
C3 Pluriel (HB_) 2004-

OEM NO : 5094.A6

STABILIZER BAR RUBBER(Ø18)

CI032



COMPATIBLE VEHICLES :

C2 (JM_) 2003-2012

OEM NO : 5094.A9

STABILIZER BAR RUBBER(Ø18)

CI033



COMPATIBLE VEHICLES :

C2 (JM_) 2003-2012
C3 I (FC_) 2002-
C3 Pluriel (HB_) 2004-

OEM NO : 5094.97

STABILIZER BAR RUBBER(Ø20)

CI034



COMPATIBLE VEHICLES :

C2 (JM_) 2003-2012
C3 I (FC_) 2002-
C3 Pluriel (HB_) 2004-

OEM NO : 5094.96

STABILIZER BAR RUBBER

CI070



COMPATIBLE VEHICLES :

C4 II (NC_) 2009-2017
C4 I Sedan 2006-2011
C4 I (LC_) 2004-2011
C4 Grand Picasso I (UA_) 2006-2011
C4 Coupe (LA_) 2004-2011

OEM NO : 5094.E3, 5094.89

STABILIZER BAR RUBBER (Ø 21)

CI082



COMPATIBLE VEHICLES :

SAXO (S0,S1) 1996-2003

OEM NO : 5094.57

STABILIZER BAR RUBBER (Ø 19)

CI083



COMPATIBLE VEHICLES :

SAXO (S0,S1) 1996-2003
AX (ZA_) 1986-1998

OEM NO : 5094.59

STABILIZER BAR RUBBER (Ø22)

CI085



COMPATIBLE VEHICLES :

C4 II (B7) 2009-
C4 I (LC_) 2004-2011
C4 Grand Picasso II 2013-
C4 Grand Picasso I (UA_) 2006-2011
C4 Coupe (LA_) 2004-2011

OEM NO : 5094.88, 5094.E0

STABILIZER BAR RUBBER, FRONT (Ø 22 MM)

CI132



COMPATIBLE VEHICLES :

DS3 Cabrio 2013-2015
DS3 (SA_) 2009-2015

OEM NO : 5081P4, 5081P4S, 9685315980

STABILIZER BAR RUBBER(Ø20)

PE004



COMPATIBLE VEHICLES :

XANTIA Break (X1) 1995-1998
XANTIA Break (X2) 1999-2003
XSARA (N1) 1997-2005
XSARA Break (N2) 1997-2005
XSARA Coupe (N0) 1998-2005

OEM NO : 5094.79

STABILIZER BAR RUBBER(Ø19)

PE018



COMPATIBLE VEHICLES :

XSARA (N1) 1997-2005
XSARA Break (N2) 1997-2005
XSARA Coupe (N0) 1998-2005
XSARA Furgonato 2000-2005
XSARA PICASSO (N68) 1999-

OEM NO : 5094.66

STABILIZER BAR RUBBER(Ø22)

PE020



COMPATIBLE VEHICLES :

BERLINGO (MF) 1996-
BERLINGO Furgonato (M_) 1996-

OEM NO : 5094.77

STABILIZER BAR RUBBER

PE034



COMPATIBLE VEHICLES :

JUMPY Box 2007-
C8 (EA_,EB_) 2002-

OEM NO : 5081.Q3, 5081.L0, 1440123280, 1440177280, 1400245280

STABILIZER BAR RUBBER (Ø 20 MM)

PE078



COMPATIBLE VEHICLES :

C3 II (SC_) 2009-
C3 III (SX) 2016-
C3 III Van (SX_,SY_) 2019-
C4 CACTUS 2014-
DS3 (SA_) 2009-2015

OEM NO : 5081.P3, 5081.P3 SK, 96 747 462 80, 96 747 462 80 SK,

STABILIZER BAR RUBBER (Ø 21,5 MM)

PE135



COMPATIBLE VEHICLES :

C3 II (SC_) 2009-
DS3 (SA_) 2009-2015
DS3 Cabrio 2013-2015

OEM NO : 96 747 463 80

STABILIZER BAR RUBBER (Ø20 MM)

PE145



COMPATIBLE VEHICLES :

C-ELYSEE (DD_) 2012-2017

OEM NO : 1608388580, 5094.C1

STABILIZER LINK

RE1220



COMPATIBLE VEHICLES :

JUMPER Bus 2006-
JUMPER Furgonato 2006-
JUMPER Pianele piatto/Telaio 2006-

OEM NO : 6001547138, 8200277960

STABILIZER BAR BUSHING

CI030



COMPATIBLE VEHICLES :

XANTIA Break (X2) 1999-2003
XANTIA Break (X1) 1995-1998
XANTIA (X2) 1999-2003
XANTIA (X1) 1993-1998
JUMPY Platform/Chassis

OEM NO : 5093.15, 1313056080, 1300720080

BUSH FOR LINK STABILIZER

FI1049



COMPATIBLE VEHICLES :

XANTIA Break (X2) 1999-2003
XANTIA (X2) 1999-2003
JUMPY Box (BS_,BT_,BY_,BZ_) 1994-
EVASION (22,U6) 1994-2002

OEM NO : 1308664080*, 1317425080*, 5087.35*

BUSH FOR LINK STABILIZER

VW940



COMPATIBLE VEHICLES :
JUMPER Box (230L) 1994-2002
JUMPER Bus (230P) 1994-2002
XM (Y4) 1994-2000
XM Break (Y4) 1994-2000

OEM NO : 1J0411315C* , 1J0411315J* , 1J0411327

BUSH FOR LINK STABILIZER, KIT

VW940-K



COMPATIBLE VEHICLES :
JUMPER Box (230L) 1994-2002
JUMPER Bus (230P) 1994-2002
XM (Y4) 1994-2000
XM Break (Y4) 1994-2000

OEM NO : 1J0411315C* , 1J0411315J* , 1J0411327

TORSION BUSHING

CI017



COMPATIBLE VEHICLES :
C4 I (LC_) 2004-2011
C4 Coupe (LA_) 2004-2011

OEM NO : 5131.A5

AXLE BUSHING

CI052



COMPATIBLE VEHICLES :
C4 Grand Picasso II 2013-
C4 Picasso II 2013-

OEM NO : 9803481180

AXLE BUSHING, BACK

CI129



COMPATIBLE VEHICLES :
BERLINGO MULTISPACE (B9) 2008-2016
BERLINGO / BERLINGO FIRST MPV (MF_, GJK_, GFK_) 1996-2011

OEM NO : 5131H1, 9681017080

AXLE BUSHING

CI130



COMPATIBLE VEHICLES :
C3 III (SX) 2016-
C3 II (SC_) 2009-
C3 AIRCROSS II (2R_, 2C_) 2017-
C-ELYSEE (DD_) 2012-2017
C3 PICASSO (SH_) 2009-2013

OEM NO : 3637302, 5131.H4, 96 806 675 80

AXLE BUSHING

CI131



COMPATIBLE VEHICLES :
DS4 (NX_) 2011-2015
C4 II (NC_) 2009-2017
C4 I (LC_) 2004-2011
C4 Coupe (LA_) 2004-2011

OEM NO : 5131.G4

TRAVERSE BUSH, UPPER

PE1007



COMPATIBLE VEHICLES :
C5 III (RD_) 2008-2015
C5 III Break (TD_) 2008-
C6 2005-2012

OEM NO : 3656.04, 3657.04, 3656.04S

SHOCK ABSORBER BUSHING, REAR

CI023



COMPATIBLE VEHICLES :
BERLINGO (MF) 1996-
BERLINGO Furgonato (M_) 1996-
XSARA (N1) 1997-2005
XSARA Break (N2) 1997-2005
XSARA Coupe (N0) 1998-2005

OEM NO : 5171.11

SHOCK ABSORBER RUBBER

CI026



COMPATIBLE VEHICLES :
JUMPY Platform/Chassis (BU_, BV_, BW_, BX_) 1999-2006
JUMPY Furgonato 2007-
JUMPY Box (BS_, BT_, BY_, BZ_) 1994-
JUMPY Box 2007-

OEM NO : 5031.50

SHOCK ABSORBER RUBBER

PE055



COMPATIBLE VEHICLES :

JUMPER Box (230L) 1994-2002
JUMPER Bus 2006-
JUMPER Bus (230P) 1994-2002
JUMPER Bus (244, Z_) 2002-
JUMPER Furgonato 2006-

OEM NO : 5035.40, 5035.50, 1320987080

LEAF SPRING BUSHING

CI029



COMPATIBLE VEHICLES :

JUMPER Furgonato (244) 2002-
JUMPER Bus (244, Z_) 2002-
JUMPER Bus (230P) 1994-2002
JUMPER Box (230L) 1994-2002

OEM NO : 5131.73

LEAF SPRING BUSHING

CI076



COMPATIBLE VEHICLES :

JUMPER Pianele piatto/Telaio (230)
1994-2002
JUMPER Pianele piatto/Telaio 2006-
JUMPER Furgonato (244) 2002-
JUMPER Furgonato 2006-

OEM NO : 5131.72, 1304640080, 1315725

CAP, FUEL OVERFLOW

M16



COMPATIBLE VEHICLES :

AX (ZA_) 1986-1998
BX Break (XB_) 1983-1994
C15 (VD_) 1984-2005
C15 Station Wagon 1987-1996
C3 I (FC_) 2002-

OEM NO : A0009871145, 0009871145, 068130229A, 68130229,

SEAL RING, OIL DRAIN PLUG

M17



COMPATIBLE VEHICLES :

JUMPER Bus 2006-

OEM NO : 1005593, 1 005 593

AIR FILTER CHOCK

CI133



COMPATIBLE VEHICLES :

C4 PICASSO I MPV (UD_) 2007-2013
C4 Coupe (LA_) 2004-2011
C3 PICASSO (SH_) 2009-2013
C2 (JM_) 2003-2012
BERLINGO MULTISPACE (B9) 2008-

OEM NO : 1422.A3

AIR FILTER CHOCK

CI134



COMPATIBLE VEHICLES :

C3 II (SC_) 2009-

OEM NO : 1422.A4, 9814411880

AIR FILTER CHOCK

FI113



COMPATIBLE VEHICLES :

NEMO-MPV 2010-

OEM NO : 7786064, 55189138, 55184935, 51818285, 60813527

AIR FILTER CHOCK

PE139



COMPATIBLE VEHICLES :

BERLINGO MULTISPACE (B9) 2008-
2016
BERLINGO Platform şasi (B9) 2010-
2017
C2 (JM_) 2003-2012

OEM NO : 1436.H5, 1436.N9, 1436.S4

AIR FILTER CHOCK

PE140



COMPATIBLE VEHICLES :

C1 II (PA_, PS_) 2014-

OEM NO : 0348S8

Note

A series of horizontal dotted lines for writing notes.

Note

A series of horizontal dotted lines for writing notes, spanning the width of the page.

www.oksankaucuk.com.tr



**one of the biggest manufacturers
of automotive industry**

📍 Kayapa Organize Sanayi Bölgesi Kayapa Sanayi Bulvarı
No: 25/1 Nilüfer - Bursa / Türkiye

☎ +90 (224) 483 41 27

✉ info@oksankaucuk.com.tr